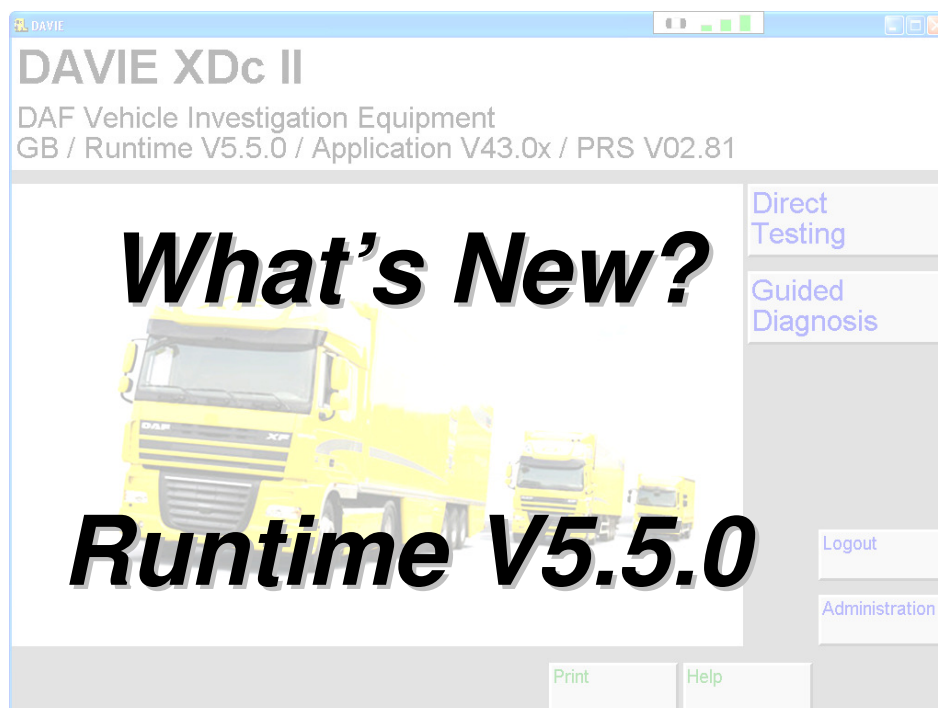


# DAVIE User & Administrator information

## What's New Runtime V5.5.0



1.	Installation procedure.....	2
1.1	Romanian language.....	2
1.2	Detection of power supply .....	2
1.3	Only Softing VCI support .....	2
1.4	Back up log files .....	2
1.5	Message added to connect the VCI to the DAVIE and truck.....	3
1.6	Auto start of the VCI Configuration Manager .....	3
1.7	Option to postpone the restart of the DAVIE laptop after installation. ....	3
2.	Softing VCI.....	4
2.1	Update of Softing VCI.....	4
3.	Runtime Changes.....	5
3.1	Print button .....	5
3.2	Log-files layout improved .....	6
3.3	Log file will not be deleted if >1000 .....	6
3.4	Vehicle error information at Direct Testing start up.....	7
3.5	Back button removed in Direct Testing and Guided Diagnosis .....	7
3.6	DAVIE related Service Rapido documents attached .....	8
3.7	Romanian language.....	9
4.	Notes .....	10

## 1. Installation procedure

### 1.1 Romanian language

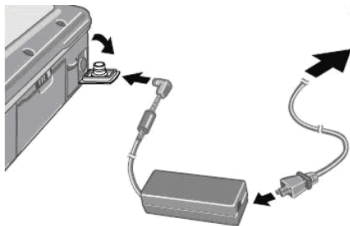


The Romanian language is now available for installation of Runtime 5.5.0.

Now 19 languages are available for installation.

The chosen language will also be used for the VCI Configuration Manager and Adobe Reader.

### 1.2 Detection of power supply



If the power supply is not connected, a message will now appear to connect the power supply.

After the power supply is connected, the installation procedure will continue automatically.

### 1.3 Only Softing VCI support

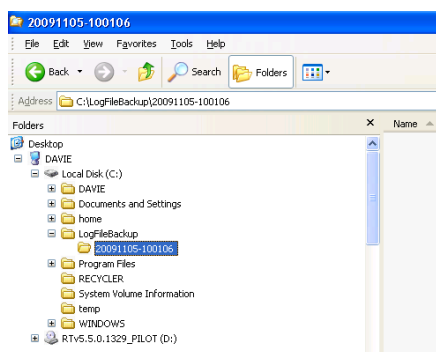


This installation of Runtime 5.5.0 only supports the Softing VCI.

Therefore the VCI selector screen has been removed.

From this Runtime version onwards, Siemens VCI cannot be used anymore.

### 1.4 Back up log files



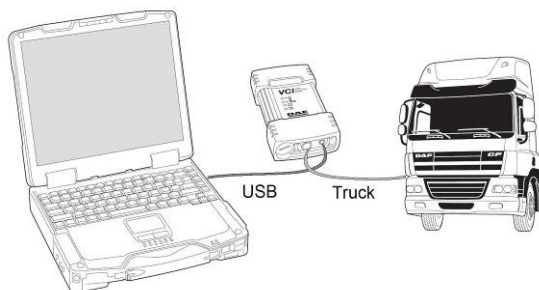
All the DAVIE log files will be backed up during the installation of the Runtime 5.5.0.

They are copied to the folder:  
C:\LogFileBackup\<Date>-<time>\

# DAVIE User & Administrator information

## What's New Runtime V5.5.0

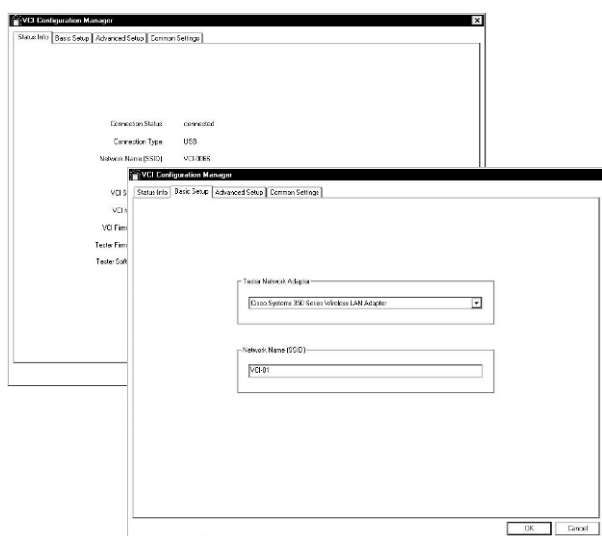
### 1.5 Message added to connect the VCI to the DAVIE and truck.



Now an extra message will be shown during installation to connect the VCI to a truck and DAVIE.

This message only appears, if wireless communication between DAVIE and VCI is allowed in your country. (Not all countries have a certificate for the wireless communication of VCI.)

### 1.6 Auto start of the VCI Configuration Manager

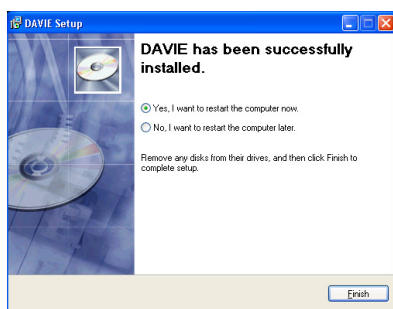


During the installation, the VCI Configuration Manager will now start up automatically.

Rematch the VCI with the Basic Setup.

This message only appears, if wireless communication between DAVIE and VCI is allowed in your country. (Not all countries have a certificate for the wireless communication of VCI.)

### 1.7 Option to postpone the restart of the DAVIE laptop after installation.



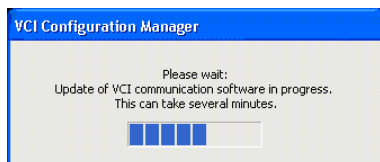
An option is available, at the end of the Runtime installation package, to postpone the laptop restart.

Close all other programs and restart the DAVIE laptop after the installation.

A restart is needed for correct functionality of the DAVIE software.

## 2. Softing VCI

### 2.1 Update of Softing VCI

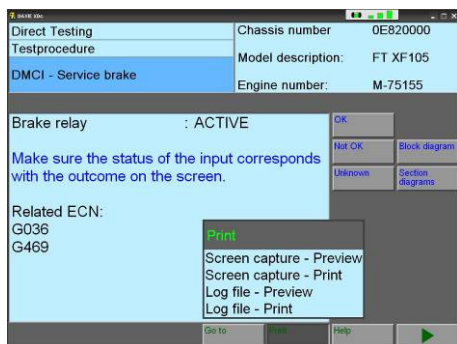


During the installation of Runtime 5.5.0 the Softing VCI will be updated with new software.

This update will improve the stability of communication between VCI and truck.

### 3. Runtime Changes

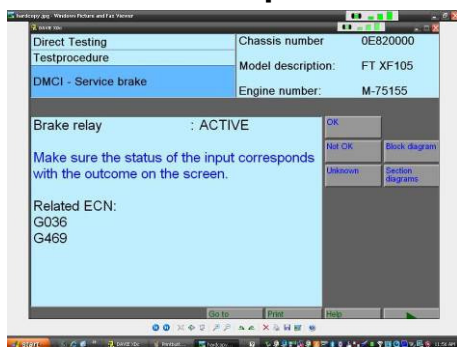
#### 3.1 Print button



The print button provides an easy method to print the current screen ('Screen capture') or to print the log file.

A preview of both is also available.

##### 3.1.1. Screen capture



The 'Screen capture' function generates a screen shot which can be viewed or printed directly by a printer.

##### <Screen capture – Preview>

The screen capture will be shown, using the standard Windows program 'Window Picture and Fax Viewer'.

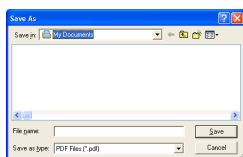
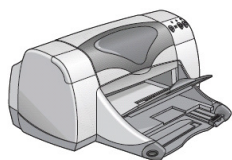
This screen capture will always be saved in the folder:

C:\DAVIE\ScreenCapture\

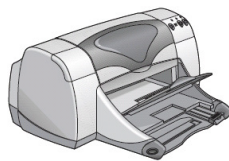
##### <Screen capture – Print>

If a printer is connected, the screen capture will be printed.

If no printer is connected, the default printer will be the DAF PDF printer and the screen capture will be saved to a PDF file. DAVIE will ask for the name of the PDF file.



**DAF**  
A **PACCAR** COMPANY


[illegible]

If no printer is connected, the default printer will be the DAF PDF printer and the log file will be saved to a PDF file. DAVIE will ask for the name of the PDF file.

[illegible]

- Better readability
- Logically grouped information
- More use of tables
- Reduction of pages

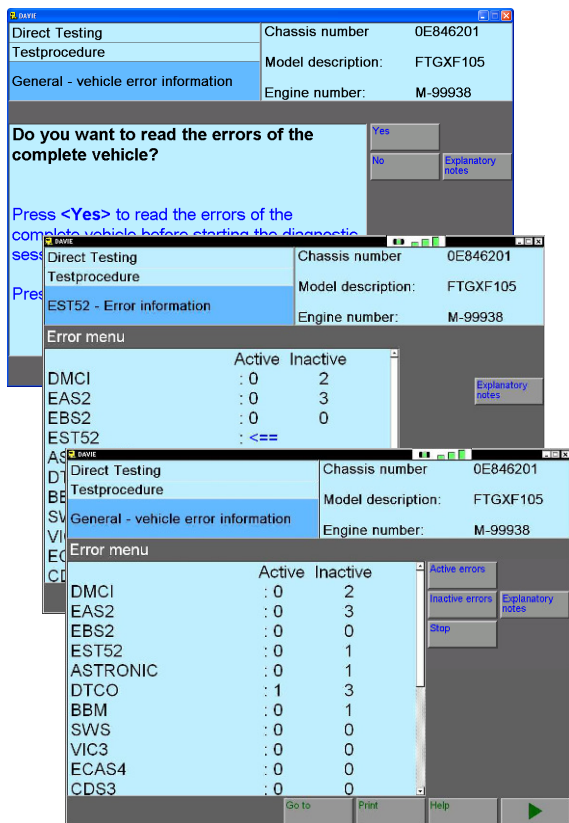
[illegible]

 Regularly backup your log files to your back up location or memory stick!

# DAVIE User & Administrator information

## What's New Runtime V5.5.0

### 3.4 Vehicle error information at Direct Testing start up



It is now possible that the DAVIE automatically executes test procedures after entering Direct Testing.

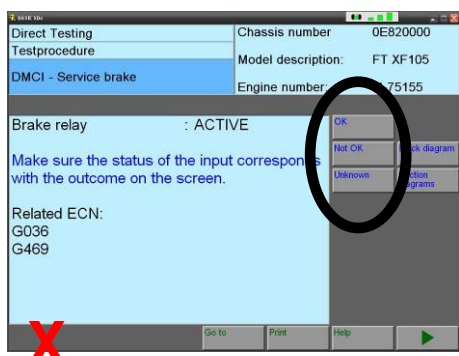
This function is now used to read out fault codes. It can also be used for other initial actions.

The vehicle error information can be used to easily retrieve error information of the complete vehicle ECU's.

Both active and inactive errors are read out. Use the buttons on the right for more information. This information is also saved in the logfile.

No additional information and freeze frame data is saved and displayed. Use the known "Error information" test if additional information and freeze frame data is needed.

### 3.5 Back button removed in Direct Testing and Guided Diagnosis



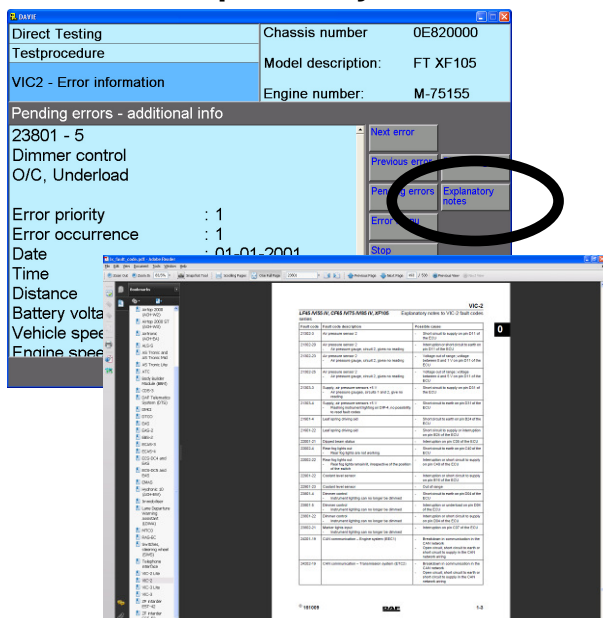
The 'back button' has been removed in all tests.

To end a test, use the <OK>, <Not OK> or <Unknown> button.



### 3.6 DAVIE related Service Rapido documents attached

#### 3.6.1. Explanatory notes



A new button, Explanatory notes, is introduced.

Via this button extra, non chassis specific information will be displayed.

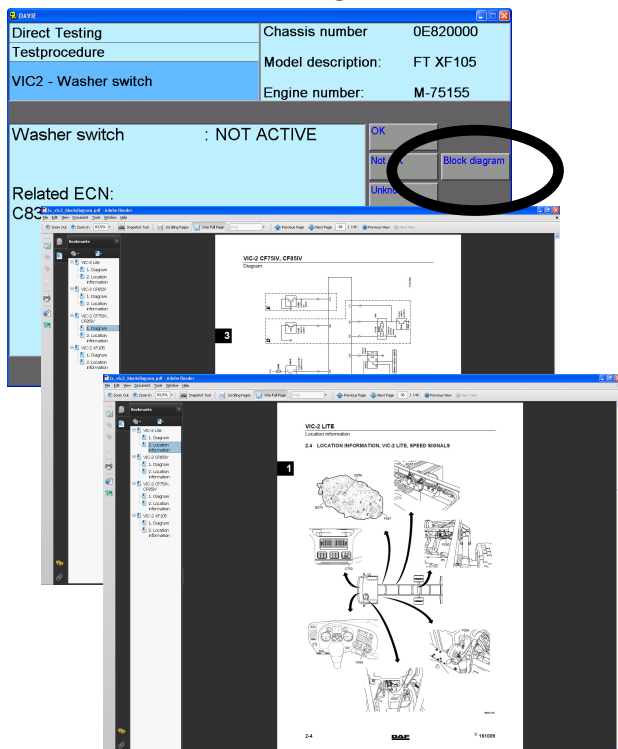
The extra information contains documents about:

- Fault codes
- Checking and testing
- Customer parameters

Use the bookmarks at the left side or the 'find function' (CTRL-F) to search in the documents.

Use the zoom function to improve the readability.

#### 3.6.2. Block diagrams



The block diagrams have the same lay out as in Service Rapido. The diagrams are not chassis specific.

In this version some systems are updated to the new lay out.

Updated systems:

- ABSE
- ASTronic
- ASTronic Lite
- BBM
- DMCI
- EAS
- EAS2
- EBS2
- ECAS3
- ECAS 4
- ECS DC3
- ECS DC4
- EST 52
- VIC 2
- VIC 3



### 3.7 Romanian language

Romanian language is now available in DAVIE.

The language can be selected during the application installation.

---

## 4. Notes